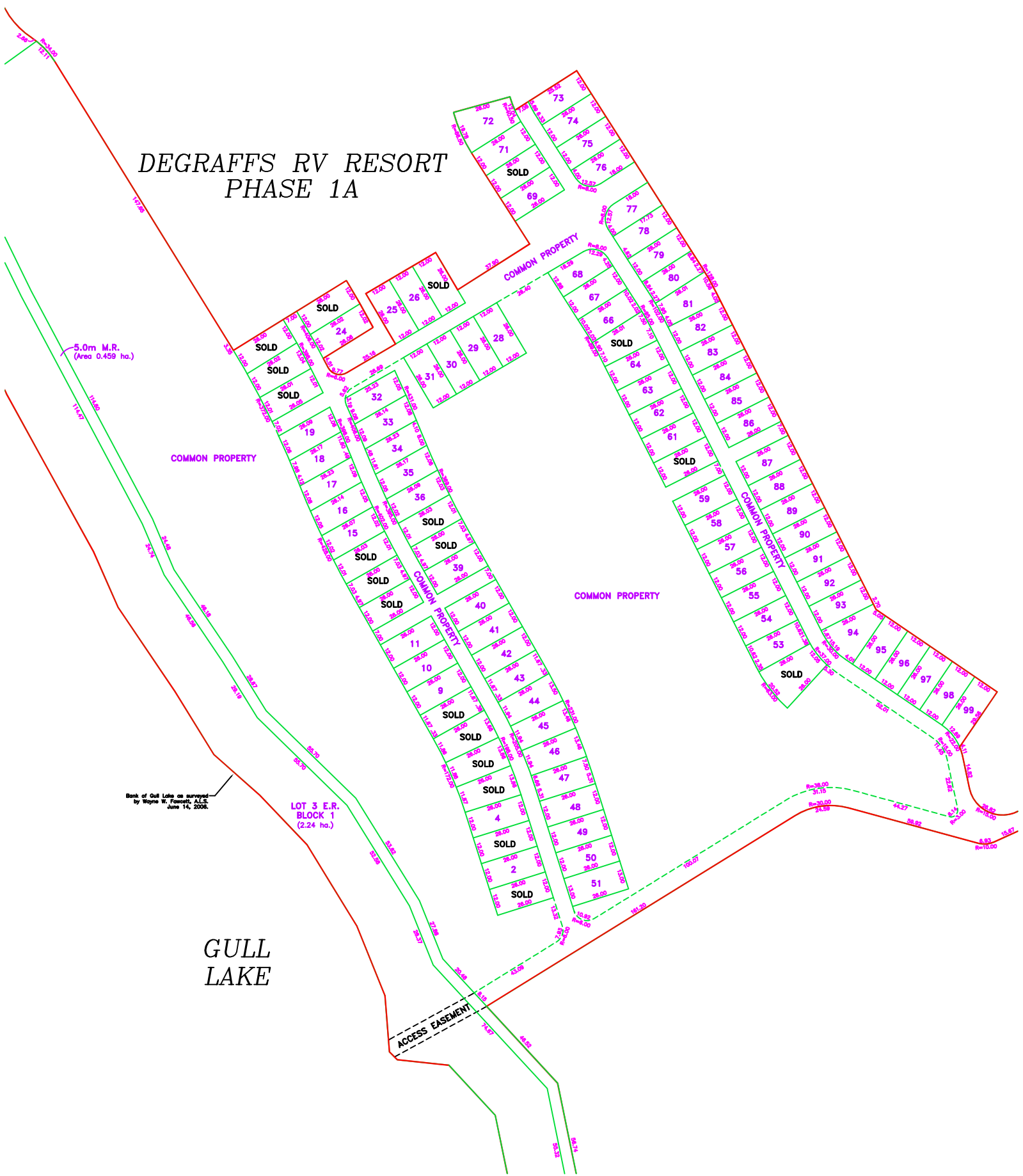


# DEGRAFFS RV RESORT PHASE 1A



COMMON PROPERTY

COMMON PROPERTY

Bank of Gull Lake as surveyed  
by Wayne W. Fennell, A.L.S.  
June 14, 2008.

LOT 3 E.R.  
BLOCK 1  
(2.24 ha.)

ACCESS EASEMENT

GULL  
LAKE